

# USB2.0 to RS232(Enhanced) Serial Manual

## USB2.0 to RS232 Serial

### I. Product introduction

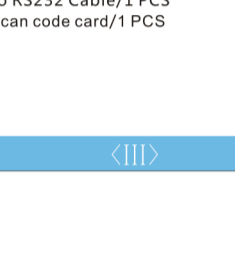
This product is an enhanced universal asynchronous transmission standard USB2.0 to RS232 serial port product,USB interface fully conforms to full speed USB2.0 specification to support full speed data transmission rate, serial port conforms to RS232 standard interface, wire with aluminum foil and 64B tin copper braided mesh double shield, strong anti-interference, signal more stable.

It can be used in cash register, LED display, nc machine tool, industrial machine, industrial instrument, bar code printer and other RS232 serial port equipment.

### II. Specification

- (1) Support baud rate of 300~1000000bps.
- (2) support super large data send and receive buffer function: 256 byte send, 768 byte receive.
- (3) Support data bits: 7, 8, 9, stop bits: 1, 1.5, 2, Check bits: Even, None, Odd, Mark, Space.
- (4) automatic hardware (RTS/CTS or DTR/DSR) flow control.
- (5) support handshake protocol control, MODEM contact signal 1:DCD, 2:RXD, 3:TXD, 4:DTR, 5:GND, 6:DSR, 7:RTS, 8:CTS, 9:RI.
- (6) Anti-electromagnetic interference design, self-powered USB bus, plug-and-play.
- (7) ESD protection of circuit integration:  
±15KV iec 1000-4-2 air gap discharge  
±8KV iec 1000-4-2 contact discharge.
- (8) support Windows XP, Win7, Win8, Win10, Mac system.

### III. Interface description

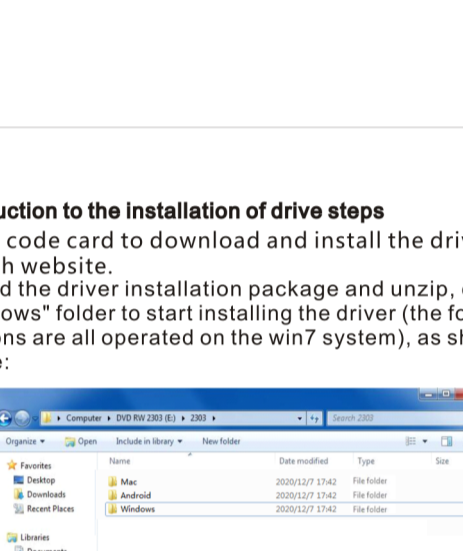


number	interface type	Communication code	Transmission direction	Function Description
1	DB9female	DCD	I	Carrier detection
2		RXD	I	Data reception
3		TXD	O	Data transmission
4		DTR	O	Data terminal ready
5	DB9male	GND		Ground (GND)
6		DSR	I	Data device ready
7		RTS	O	Request to send
8		CTS	I	Clear send
9		RI	I	Ringing indication
10		USB 2.0		

### IV. Connection diagram

#### application

applicate for connection of computer and serial interface equipment



Note: The connection diagram is for reference only.

### V. Product accessories

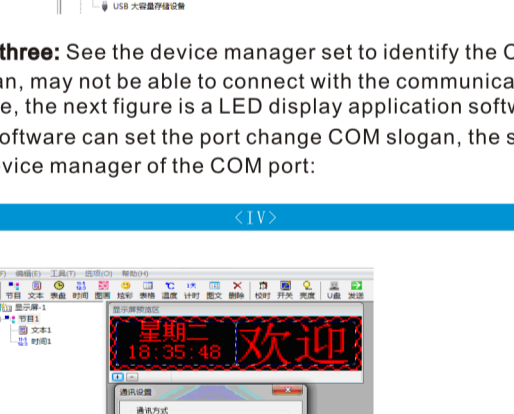
- (1) USB2.0 to RS232 Cable/1 PCS
- (2) Product scan code card/1 PCS

# USB2.0 convert RS232 Serial PL2303 Chip installation drive instruction

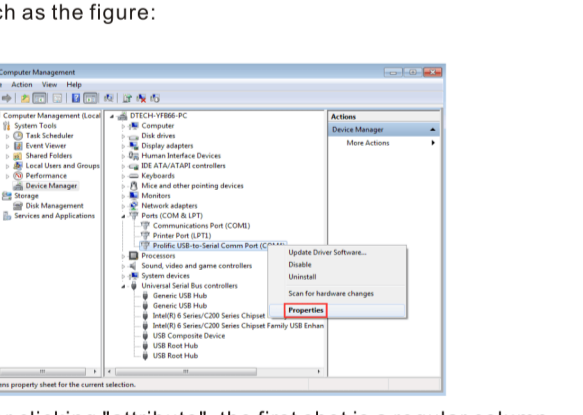
## I. Introduction to the installation of drive steps

(1)Scan code card to download and install the driver through Dtech website.

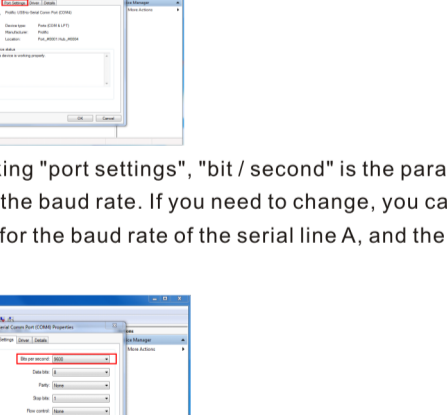
Download the driver to start installing the driver (the following instructions are all operated on the win7 system), as shown in the figure:



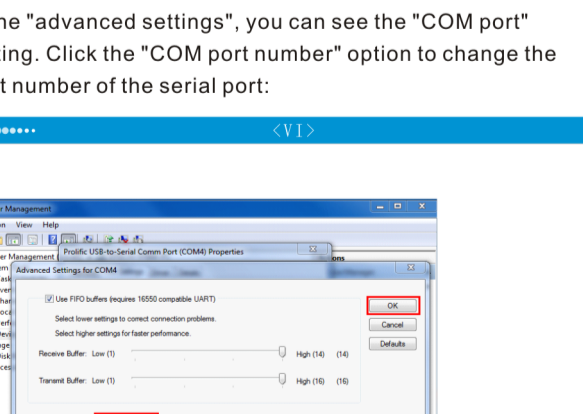
**Step two:** After clicking "windows", choose the "PL2303-Prolific-DriverInstaller-v1200" compression pack and decompress it.



**Step three:** After decompression, double click the application window as shown below.

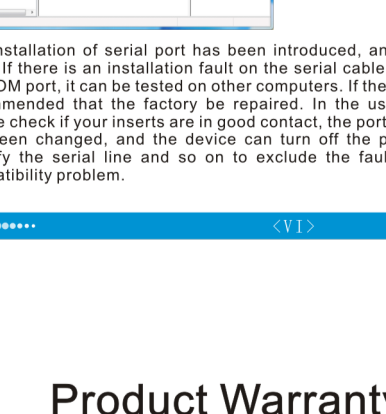


**Step five:** After clicking on "next step", the system will automatically complete the process of installation, and after the end of the installation process, click the "complete" in the dialog box to end the installation process:

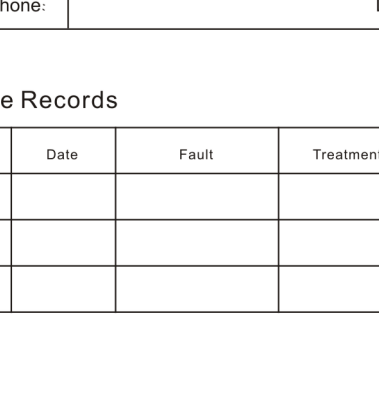


## II. Setting up port number in Device Manager

Step one: Right click on the computer and choose "management".



**Step two:** Insert the serial port line into the computer USB interface, select "this device manager" in "management", in "device manager", "port" this item can see that the serial port line has been installed, and pops "COM".



If you insert the serial port line in the "device manager", not to see the driver, but to display "unknown Device", then replace the computer and USB test, if this is the case, it may be a serial line failure, it is recommended to return to the factory to replace line. Figure:



**Step three:** See the device manager set to identify the COM slogan, may not be able to connect with the communication device, the next figure is a LED display application software, the software can set the port change COM slogan, the same as device manager of the COM port:



**Step four:** If there are no more COM ports in the software, or the selected COM port is still unable to connect, then you need to change the COM number in the device manager, right click the "COM" port in the map, and select the attributes such as the figure:



After clicking "attribute", the first shot is a regular column. The status of the device shows "this device is working properly". The driver installation does not appear to be a problem, and then click "port settings", such as:



After setting the port number of the serial port line, you can return to the "device manager" to see if the port line has changed the port number. If the port number is still unchanged, you can click the update driver icon in the port number (the general win7 system will automatically update the port number, XP system after the system is set up. " You need to update the driver to see if the port number is changed. For example, click Scan key:



The installation of serial port has been introduced, and the whole process has been used. If there is an installation fault on the serial cable or an exclamation mark before the COM port, it can be tested on other computers. If the same phenomenon occurs, it is recommended that the factory be repaired. In the use of communication problems, please check if your inserts are in good contact, the port number is wrong, the baud rate has been changed, and the device can turn off the power reboot, or let the device identify the serial line and so on to exclude the fault, but it does not exclude the compatibility problem.

# Product Warranty Card

## Customer Information

Model:	
Date of purchase:	
User telephone:	
User address:	
Distributor:	
Agency address:	
User telephone:	Dealer stamp valid

## Intenance Records

Repair times	Date	Fault	Treatment measures	Repair work NO.